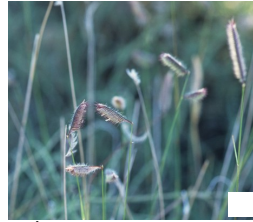


Interesting Plants of Fall

Which plants can you find? ☒

GRASSES



Sideoats Grama



Blue Grama



Buffalo



Curly Mesquite



Upland Switch



Green Sprangletop



Little Bluestem

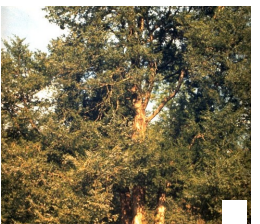


Indian

TREES



Morning Cloud Chitalpa



Eastern Red Cedar



Cedar Elm

FLOWERS



Butterfly Weed



Purple Cornflower



Cardinal Flower

Please visit these additional garden sites that are accessible from inside the Bush Center:

5. Ceremonial Court Yard - plants of interest are Morning Cloud Chitalpa, Agaves, Cacti, and perennials that include Mist Flower, Texas Betony and Copper Canyon Daisy.

6. Rose Garden - entrance from the Oval Office provides a quiet walk among Southern Magnolias, Natchez Crape Myrtle, Chaste Trees, Texas Mountain Laurel, ferns, sages, perennials, annuals, aquatics, vines and four rose varieties: Cecile Brunner Rose, Gruss and Aachen Rose, Perle d'Or Rose and Winchester Cathedral Rose.

FLOWERS



Texas Bluebell



Turks Cap



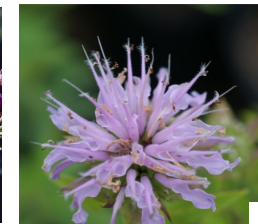
Pitcher Sage



Blue Mealy Sage



Western Ironwood



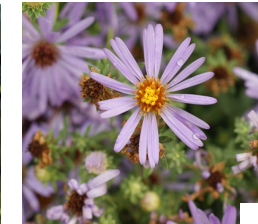
Horsemint



Obedience Plant



Tall Goldenrod



Fall Aster

Additional information about the Texas Native Park and Docent Guided Tours is online at www.bushcenter.org



GEORGE W. BUSH PRESIDENTIAL CENTER



Self-Guided Tour Native Texas Park

FALL GUIDE

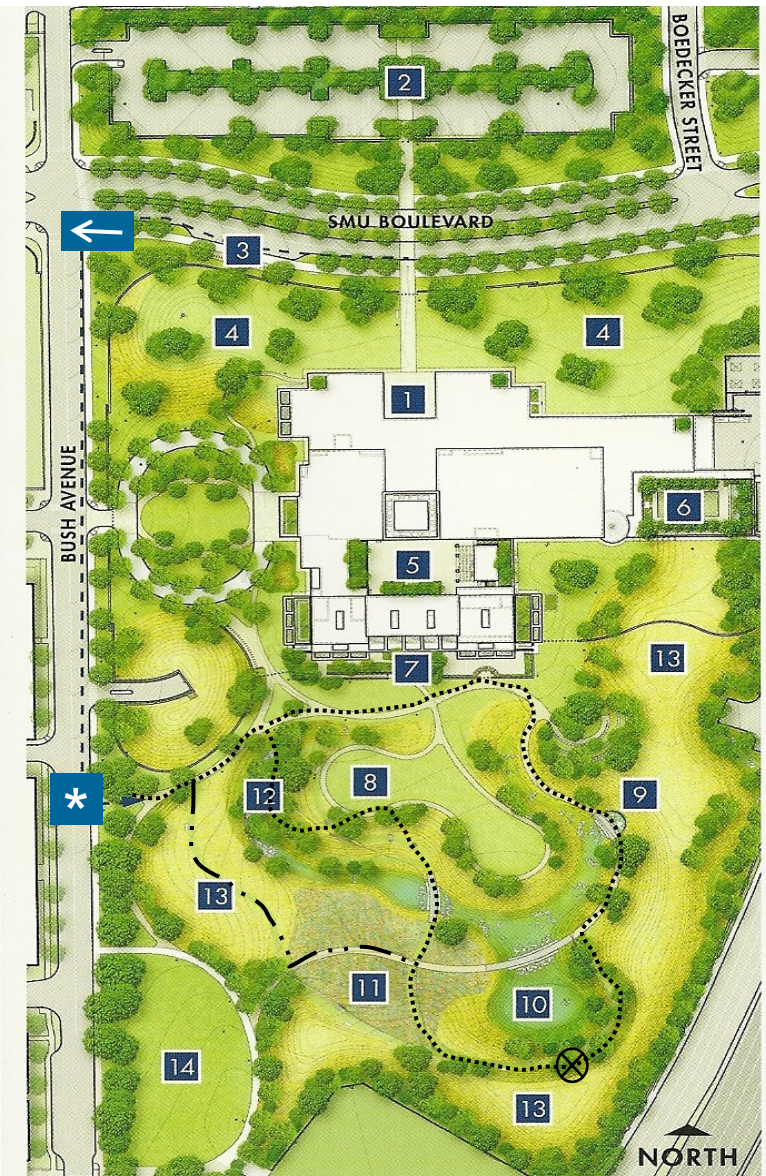
Welcome to the George W. Bush Presidential Center with a native Texas landscape in a 15-acre urban park. The Bush Center grounds reflect President and Mrs. Bush's longstanding commitment to environmental conservation and restoration. The Native Texas Park features:

- Native Blackland Prairie grasses
- Seasonal wildflowers
- Clearings that provide native habitats for butterflies, birds, and other species
- Tree-shaded lawns
- Amphitheater

A one mile network of paths will take you through native Texas environments such as Blackland Prairie, Post Oak Savannah and Cross Timbers Forest.

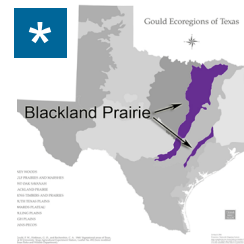


The Bush Center from the south, overlooking the Native Texas Park.



- | | |
|-------------------------|----------------------------|
| * Park entrance | 8. Great Lawn |
| 1. Bush Center Entrance | 9. Forebay |
| 2. Parking Lot | 10. Wet Prairie |
| 3. Bus Drop off | 11. Wildflower Meadow |
| 4. North Lawn | 12. Seep |
| 5. Ceremonial Courtyard | 13. Prairie |
| 6. Texas Rose Garden | 14. SMU Informal Field |
| 7. South Terrace | ⊗ 360 degree panorama view |

Using the Center's Landscape Education Map and Guide with this suggested path, you may travel at your own pace to specific highlighted areas where you may learn about the function of each area and identify the plants that live there. The map key corresponds to the numbers for each area. Seasonal plants are pictured elsewhere in this brochure. Please protect this habitat by staying on the pathways.



To start the tour, please use the Bush Avenue Entrance: There are many trails, pathways, steps and restful benches as you explore our 15 acre park. Take a moment, as you follow this suggested route, to venture onto these other paths. Sit and enjoy the quiet sounds of the water trickling from the Seep, observe the grasses blowing in the wind, and discover the many birds, butterflies and insects that inhabit this re-established Blackland Prairie in the heart of Dallas.

4./8. North Lawns/Great Lawn: The grass consists of a mix of five types of native grasses: Buffalo Grass, Blue Grama, Texas Grama, Poverty Drop Seed and Curly Mesquite (a similar mix called Habiturf may be purchased from the Ladybird Johnson Wildflower Center website). This grass mixture requires less mowing (3-4 times a year), watering (1/2" of water every two weeks in drought), weeding and feeding than other traditional lawns. It is not good for athletic fields or high traffic areas. Once established, it can be mowed to a height of three to four inches for a more traditional look.

12. The Seep is a 150 foot long limestone wall that serves as an outlet for water collected from the northwest side of the site. A shady micro-climate and fluctuating water levels support moisture-loving plants. A few you will see here are: Maidenhair Ferns, Spiderlily and Buttonbush.

13. The West Prairie (follow the — · · — path) is behind the Seep area with a pathway allowing another entrance to the Wildflower Meadow. The three prairies, **East, South and West (13)**, consist of 37 grass species and 53 wildflower species, including Indian Grass, Switchgrass, Goldenrod, Cornflowers, Indian Blanket, Horsemint and many more; establishing a habitat for birds, butterflies and other indigenous wildlife.

Cross over the **wood bridge**. The park bridges highlight the beauty and sustainability of Black Locust wood. It is resistant to rot and extremely hard, making it an excellent and sustainable alternative to tropical hardwoods.

11. The Wildflower Meadow brings the spectacular, early springtime, Central Texas event — the blooming Bluebonnets — into the city for all to see. Accompanying the Bluebonnets, are Pink Evening Primrose, Texas Paintbrush and Scrambled Eggs.

10. The Wet Prairie: Rainwater from the parking areas, paths and planted zones travels to the Wet Prairie through a series of overland bioswales and underground pipes. Because of the moisture fluctuations, the plant life here also includes moisture-adapted plants such as Green Sprangletop and Maximilian Sunflower. Grasses include Little Bluestem and Bushy Bluestem. Some sedges to look for are Cherokee Sedge and Inland Sea Oats.

Pause here ⊗ at the top of the hill in the southern-most edge of the property and enjoy **Laura Bush's favorite view** from the grounds. Take in a 360 degree panorama of Dallas' skyline, SMU's Georgian campus and the Bush Center.

9. The Forebay: This man-made pool allows water from the paved service area and the building to filter here before being released into the park, temporarily detaining the water, slowing down the velocity and allowing sediment to further settle prior to it flowing into the Wet Prairie and cistern.

13. The East Prairie and Amphitheater: The Amphitheater is situated in one of the Post Oak Savannahs. Some of the trees and bushes here are: Bur Oak, Eastern Red Cedar, Pecan, Possumhaw, Eve's Necklace, Beautyberry and Flameleaf Sumac. The indigenous limestone used here, and throughout the park, is Leuders Limestone from Abilene.

7. The South Terrace is not open to the public but continues the use of Texas native plants: Morning Cloud Chitalpa, Dwarf Yaupon Holly, Turks Cap, Hinkley Columbine and Mealy Blue Sage.